



Is InnovAge PACE right for you?

Neighborhood
center for senior
healthcare

InnovAge PACE (Program of All-inclusive Care for the Elderly) is an alternative to nursing facilities that provides personalized healthcare and social support to aging adults to help them stay independent. If you answer “Yes” to any of the questions below, you may be eligible for InnovAge PACE.

Yes **No**

- ☐ ☐ **I am 55 years or older.**
- ☐ ☐ **I currently have Medicaid.**
- ☐ ☐ **I’ve made multiple trips to the hospital or emergency room in the past 6 months.**
- ☐ ☐ **I need help with activities like bathing, dressing, eating, or walking.**
- ☐ ☐ **I need transportation to medical appointments.**
- ☐ ☐ **I can live safely in my home with help from others.**
- ☐ ☐ **I live in the InnovAge PACE service area. (If you’re unsure, call us to confirm.)**

**Call today to find out if you or your loved one
qualifies for PACE.**

innovAge[®]

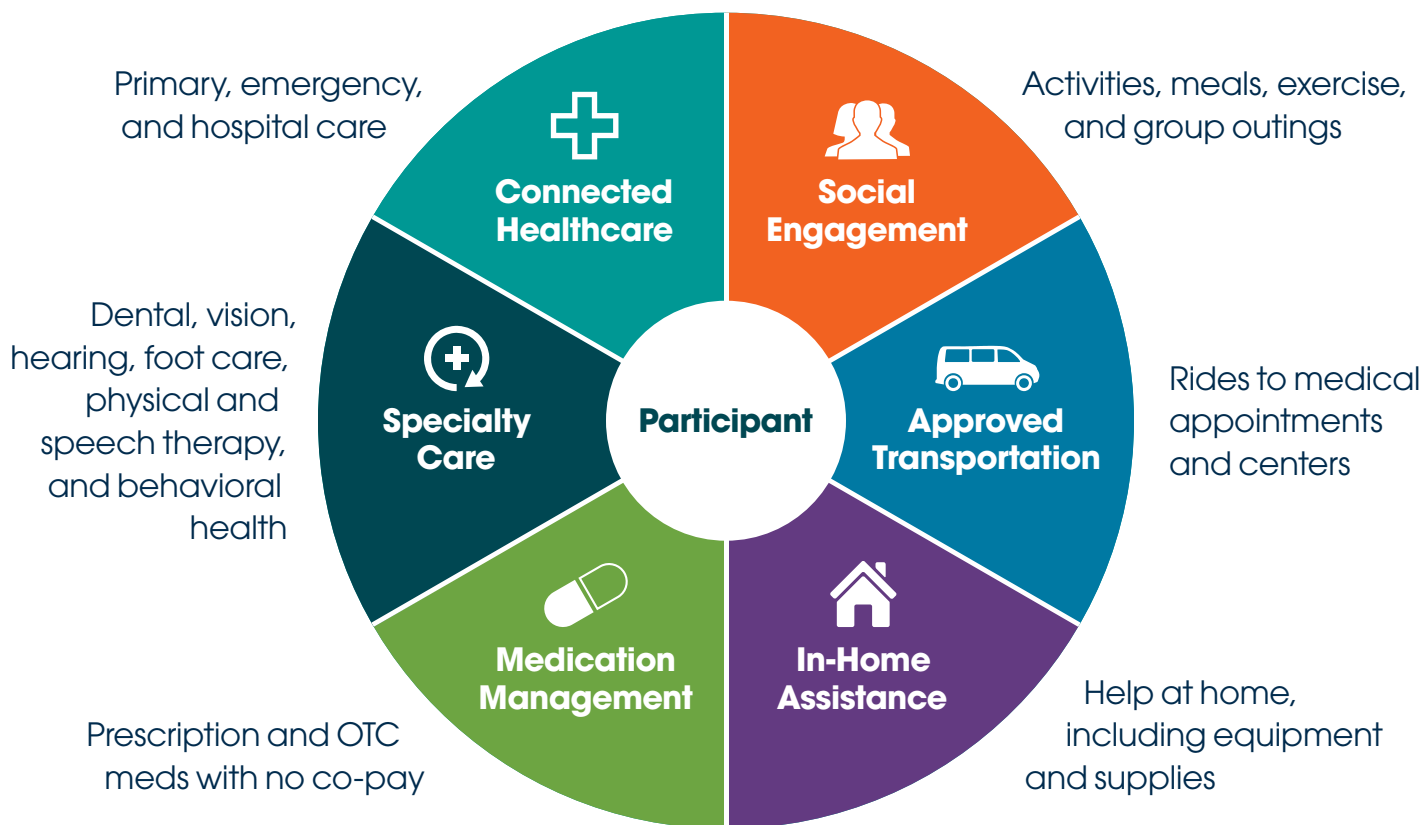
In partnership with

ORLANDO HEALTH[®]

InnovAge.com



Neighborhood center for senior healthcare



PACE – Program of All-inclusive Care for the Elderly

Call today to find out if you or your loved one qualifies for PACE.

innovAge[®]
In partnership with
ORLANDO HEALTH[®]
[InnovAge.com](https://www.InnovAge.com)